

# Asia Break Bulk (Singapore) Pte. Ltd.



## M/V “ASIAN VICTORY”

### Ship's basic

Flag/Port of Registry	Panama / Panama
Year Built	2003
Yard Name	TIANJIN XINGANG SHIPBUILDING HEAVY INDUSTRY
Class of Vessel	DNV (IACS)
Type	Multi-Purpose Dry Cargo Vessel, strengthened for heavy cargoes, equipped for the carriage of containers

### Dimensions and main data

Gross/Net tonnage	7,014 / 3,375 tons
Loa	119,77 meters
Breadth moulded	20,20 meters
Deadweight	7,700 dwt
Design draft	7,60 meters
Depth moulded	9,70 meters
Grain/Bale capacity	11.021 cbm
Service Speed	abt. 13 knots

Number of holds / hatches	2
Type of hatch cover	Hydraulic folding type

Size of Holds	No.1 = 18,90 x 9,90 x 10,80 meters LxWxH; narrows to 5.00 m over 12,30 m
	No.2 = 52.40 x 16,60 x 10,80 meters LxWxH fully boxshaped

#### Cargo Gear

2 x 250 mt SWL, El.Hydr. Cranes NMF – located at port side combinable up to 500 mt SWL;  
Outreach Crane No. 1: 4.5 m-12m / 250 mt; 4.5-15m / 200 mt; 4.5-20m / 150 mt; 4.5-26m / 100 mt; 4.5-34.5m / 35 mt

Outreach Crane No. 2: 4.5 m-12m / 250 mt; 4.5-15m / 200 mt; 4.5-20m / 150 mt; 4.5-26m / 100 mt; 4.5-31.5m / 35 mt

All details to be about and given without guarantee.

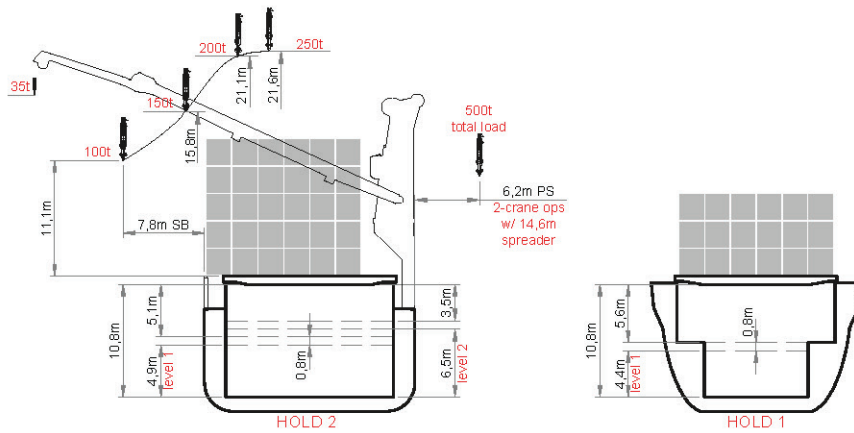
[www.asiabreakbulk.com](http://www.asiabreakbulk.com)

# Asia Break Bulk (Singapore) Pte. Ltd.

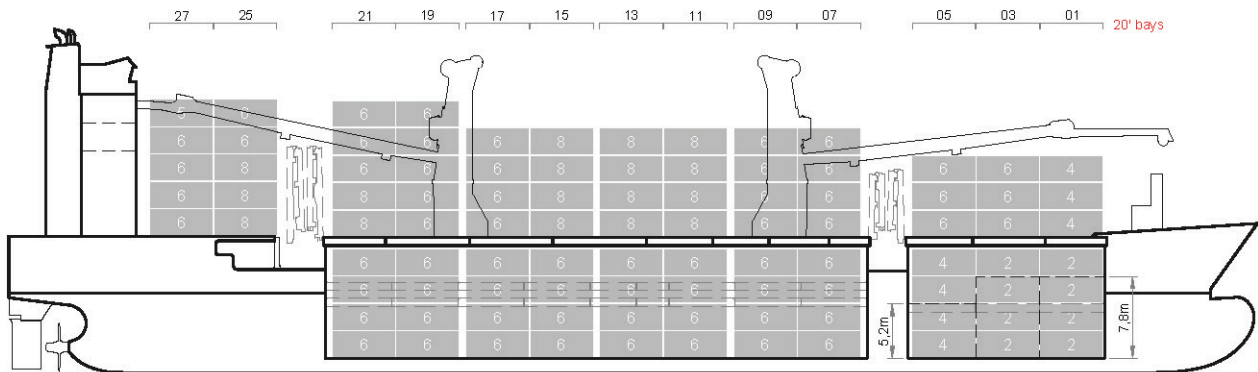


## M/V “JIAN YANG HUA QING”

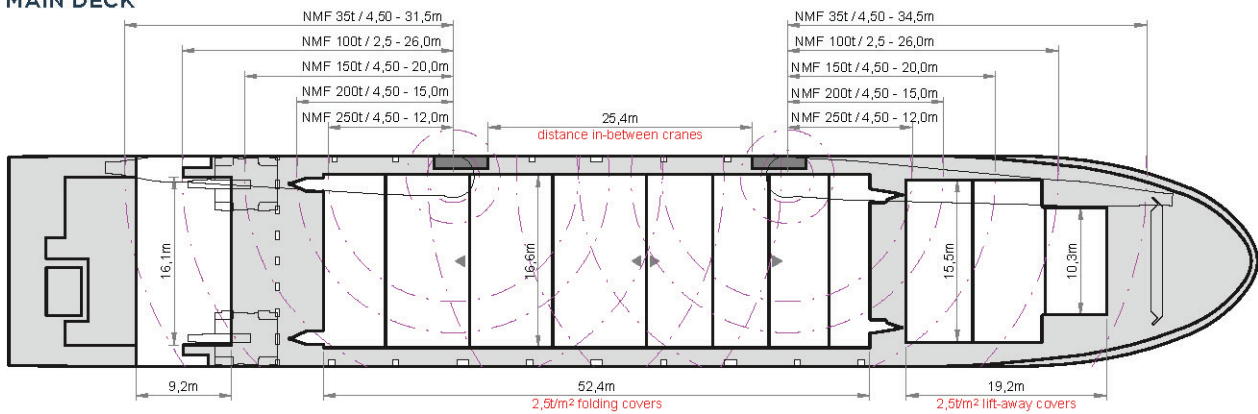
### Pocket Plan



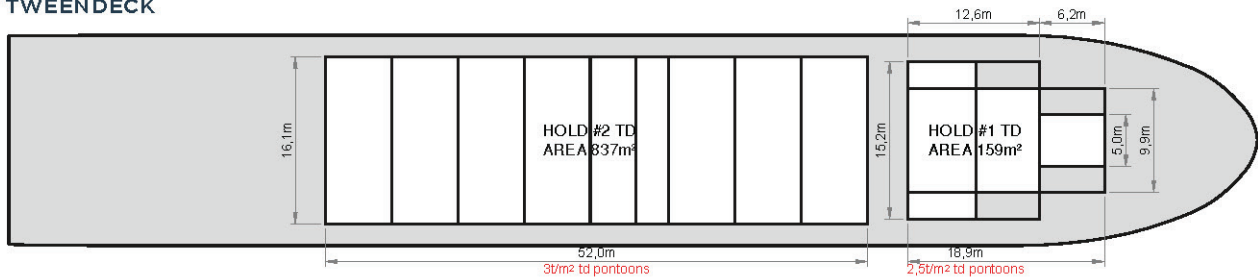
SIDE VIEW



MAIN DECK



TWEENDECK



HOLDS & DOUBLE BOTTOM

